



A. CASCADE FOUNTAIN / FUENTE DE LA CASCADA

An entry celebration, the Cascade Fountain's use of water formally invites Miami's residents and visitors to experience Museum Park.

B. TIDAL FOUNTAIN / FUENTE DE LA MAREA

A centrally located and interactive water display, the Tidal Fountain echoes the surging and receding movement of Biscayne Bay.

C. THE LAWNS / LOS CÉSPEDES

The heart of Museum Park: a place for both play and tranquil contemplation, the three different sized Lawns are also planned to allow events of various sizes to occur. The central green captures a panorama of park activity, expansive vistas to Biscayne Bay, and views back to Downtown.

D. THE PROMENADE / ESPLANADA

As a procession to the water, the Promenade provides a place for all Miamians to walk and enjoy views to the Bay and to the Museums. A series of formal gardens on both sides unites the main Lawn with the Museums Area.

E. THE BAYWALK / EL PASEO DE LA BAHIA

A place for sitting, viewing, walking, biking, and strolling along the water's edge, the Baywalk provides connection into downtown Miami and north along the Bay along the longer River Walk/Baywalk system.

F. EVENT SPACE / LA PLAZA

Flexible event space for seasonal festivals, open air markets, and ceremonies.

G. PARK PAVILION / EL PABELLÓN DEL PARQUE

The primary drop-off area for the Park is framed by a mixed-use pavilion containing public toilets, a small café, and a sheltered starting point to visit the Park.

H. RESTAURANT / RESTAURANTE

The Restaurant dining room and outdoor terrace overlook the Baywalk, the redeveloped Slip, and Bay beyond.

I. COLOR GARDEN / JARDÍN DE COLORES

Rich and brilliant with flora native and exotic to Southern Florida, the Color Garden celebrates the exceptional ecological and cultural diversity found in our tropical climate.

J. SKY GARDEN / JARDÍN CELESTIAL

A shade garden designed for contemplation and reflection, the Sky Garden reflects the dynamic qualities of the sky.

K. BAMBOO GARDEN / JARDÍN DE BAMBÚ

A whimsical forest, the Bamboo Garden is as playful as it is intimate, with a sky walk canopy and benches for lounging.

L. CHILDREN'S GARDEN / JARDÍN INFANTIL

With an emphasis on science and art learning, the Children's Garden is designed to inspire young imaginations and provoke amusing play.

M. RAIN CURTAINS / TELONES DE CORTINAS

Not only passages between gardens, the Rain Curtains are places unto themselves, offering cooling mists and gentle rain showers to the passerby.

N. THE SCALLOPS / LAS COLINAS (KNOLLS)

Architectural and exotic, these precisely sculpted landforms allow elevated of park activity. Situated between the Meadow and the Gardens, the Scallops dynamically transition one area to the next.

O. COASTAL PRAIRIE GARDEN / JARDÍN DE LA PRADERA COSTERA

A native coastal landscape display, these gardens provide access to a compacted sand beach, and offers visitors the opportunity to picnic in an authentic regional landscape.

P. OBSERVATION PLATFORM / PLATAFORMA DE OBSERVACIÓN

Sculpted viewing terraces to showcase native coastal hammock plants and provide access to the water.

Q. WATER FEATURE / CARACTERÍSTICA ACUÁTICA

R. THE ISLAND / LA ISLA

In the slip and serving as a small vessel dock, the Island encourages firsthand experience with the water. Framed by the world class Bridge, long views into the Bay are complemented by native coastal plants.

S. LARGE VESSEL DOCK / MUELLE GRANDE PARA BARCOS

A place for the temporary tie-up of historic and special vessels to compliment the other activities in the Park.

T. PEDESTRIAN BRIDGE / PUENTE DE PEATONES

Modern and iconic, the operable bridge extends the park over the Slip and into the southern Baywalk and connects to the Soccer Field, opening to allow large vessels to enter the Slip.

U. SOCCER FIELD / CANCHA DE FÚTBOL

A soccer field on the Bay, the Field provides a flexible area for various sport activities.



City of Miami

Museum Park Miami

Illustrative Plan

June 17, 2006

Cooper, Robertson & Partners
Civitas, Inc.
Spillis Candela DMJM
David Plummer & Associates
Coastal Systems International
Savino & Miller Design Studio
Hamilton, Rabinovitz & Alschuler
Construction Management Services



View from the West



View from the South



View from the East



View from the North



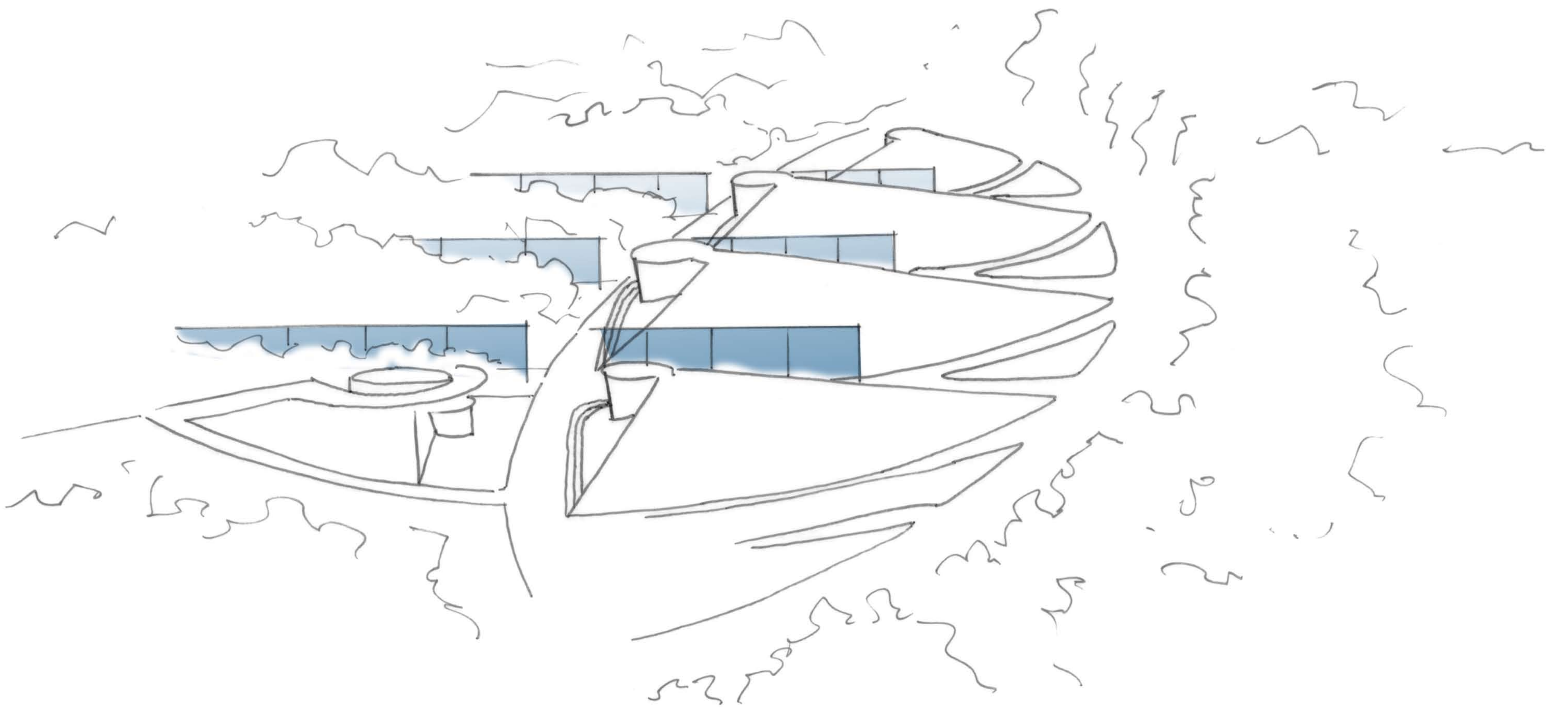
Bamboo Garden / Jardín de Bambú



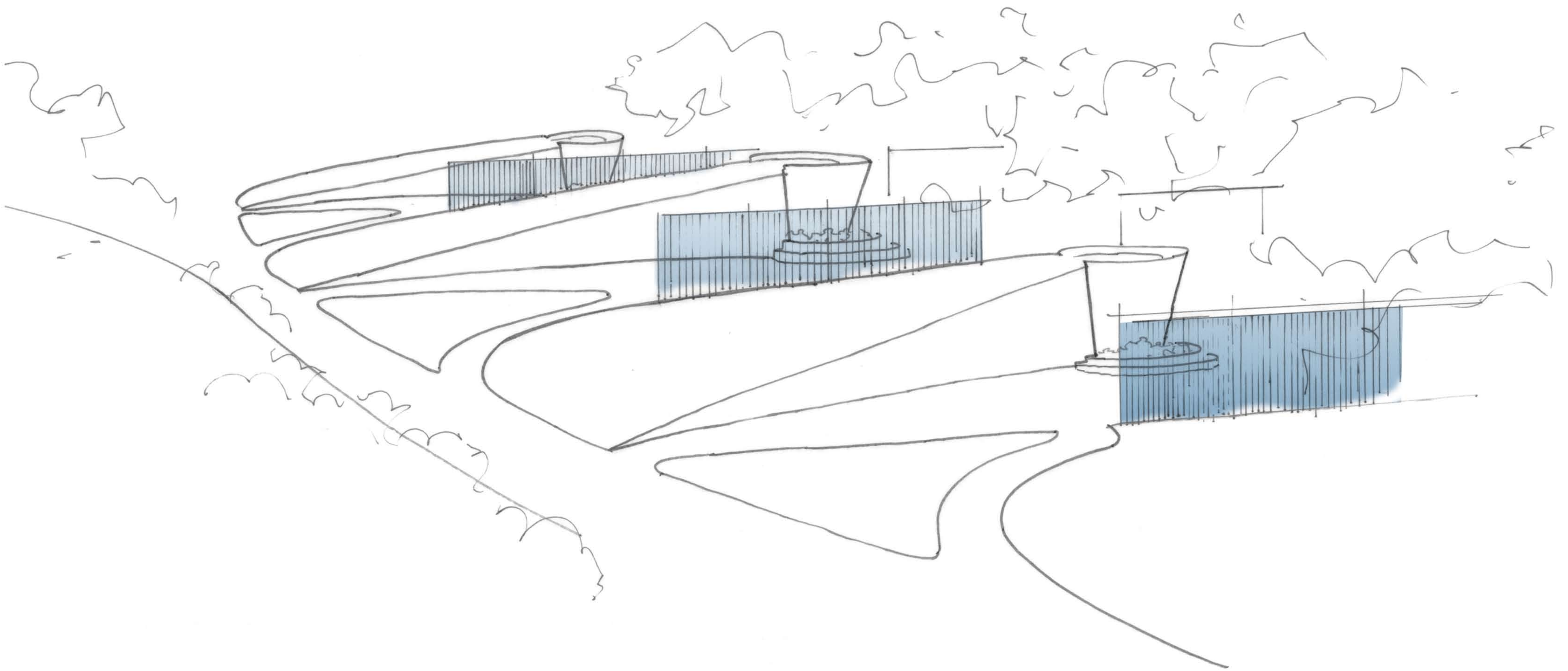
Rain Curtains / Cortinas de Lluvia



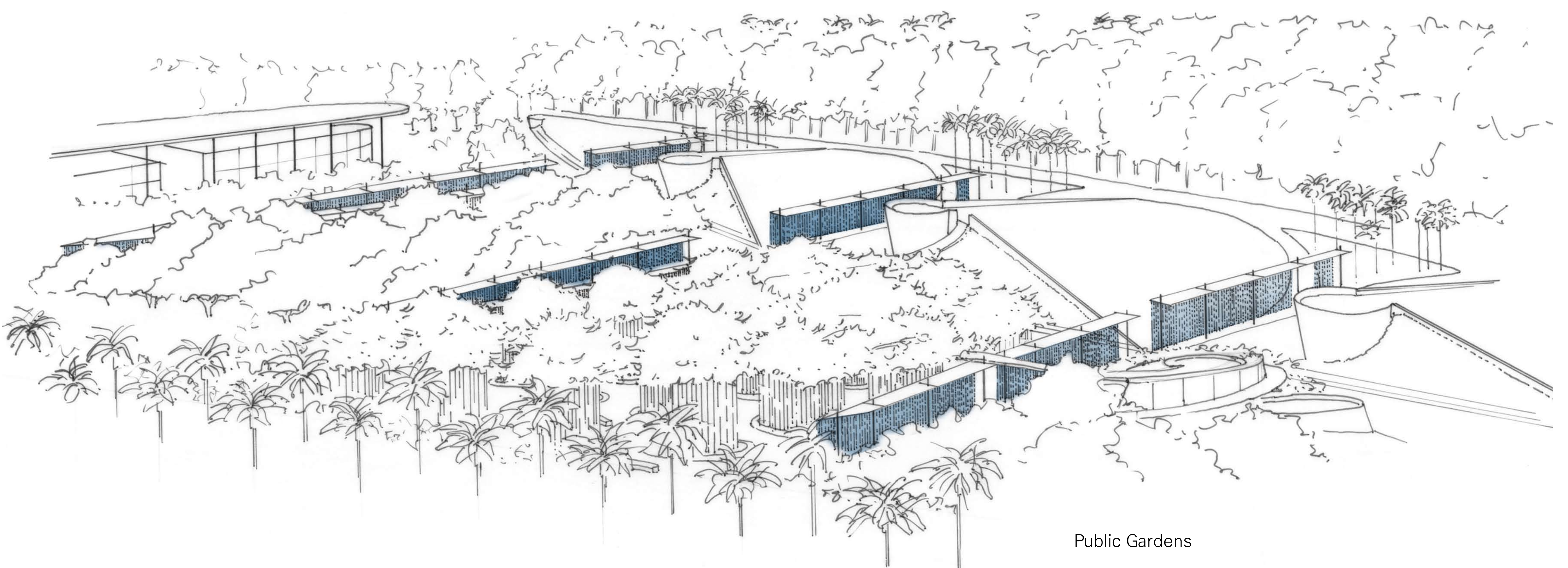
Public Gardens and The Island



The Scallops / *Las Colinas*



The Scallops / *Las Colinas*



Public Gardens



City of Miami

Museum Park Miami

Studies

Cooper, Robertson & Partners
Civitas, Inc.
Spillis Candela DMJM
David Plummer & Associates
Coastal Systems International
Savino & Miller Design Studio
Hamilton, Rabinovitz & Alschuler
Construction Management Services

CRP: 04033 June 17, 2006